

*Danfoss*

**Electrical installation instructions**

**Instrukcja instalacji elektrycznej**

**Sähköohjeet**

**Elektrische installatie instructie**

**El-vejledning**

**Installation électrique**

**Elektroanleitung**

**Elanvisning**

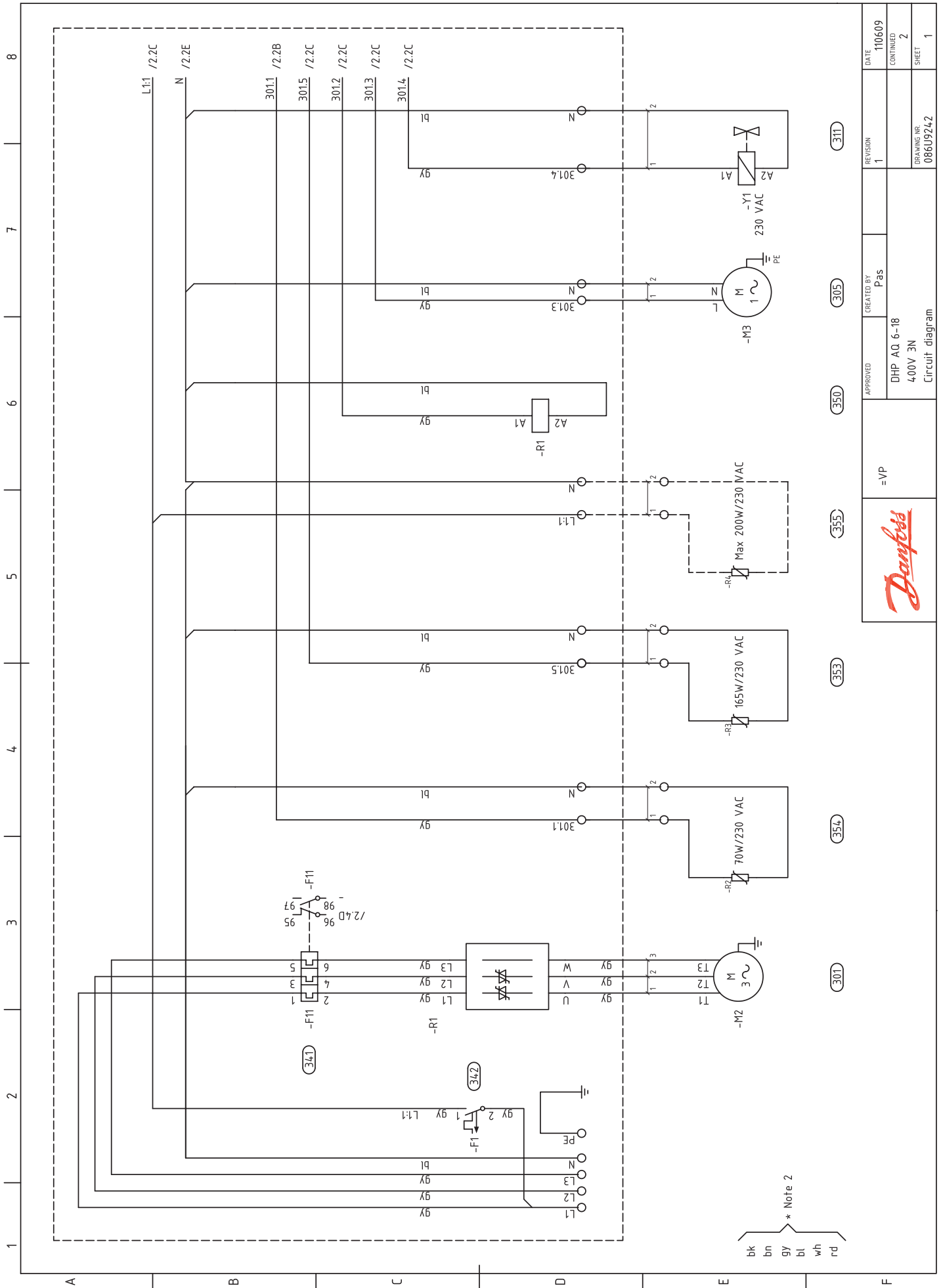
**Pokyny pro elektrickou instalaci**

**DHP-AQ**



DHP-AQ 6 – 18kW 400V 3N.....	3
DHP-AQ 6 – 16kW 230V 1N.....	16

DHP-AQ 6 - 18kW 400V 3N



311

305

350

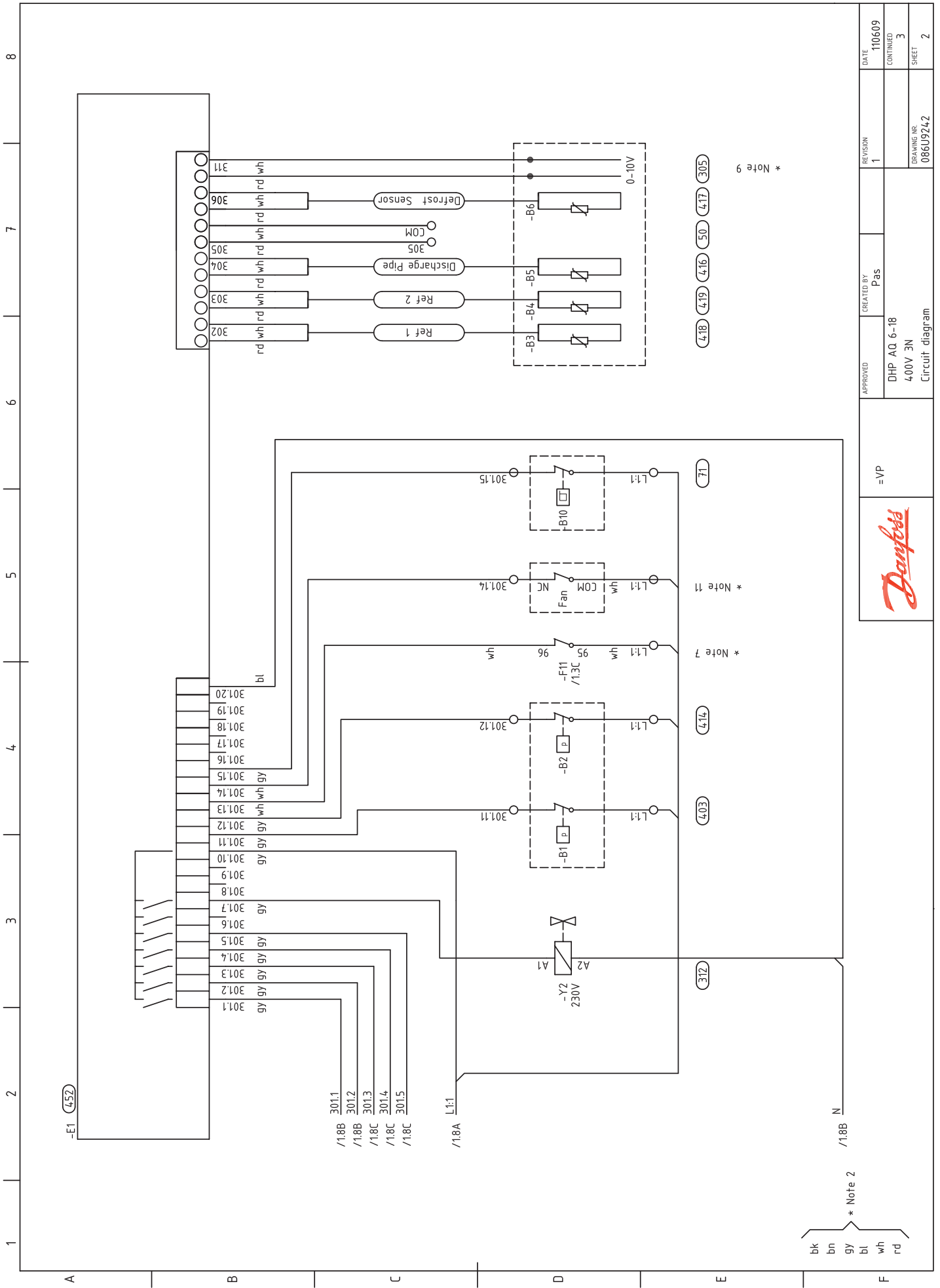
355

353

354

301

APPROVED	CREATED BY P. Pas	REVISION	DATE
		1	110609
=VP	DHP AQ 6-18 400V 3N Circuit diagram	DRAWING NR	SHEET
		086J9242	2
			1



\* Note 9

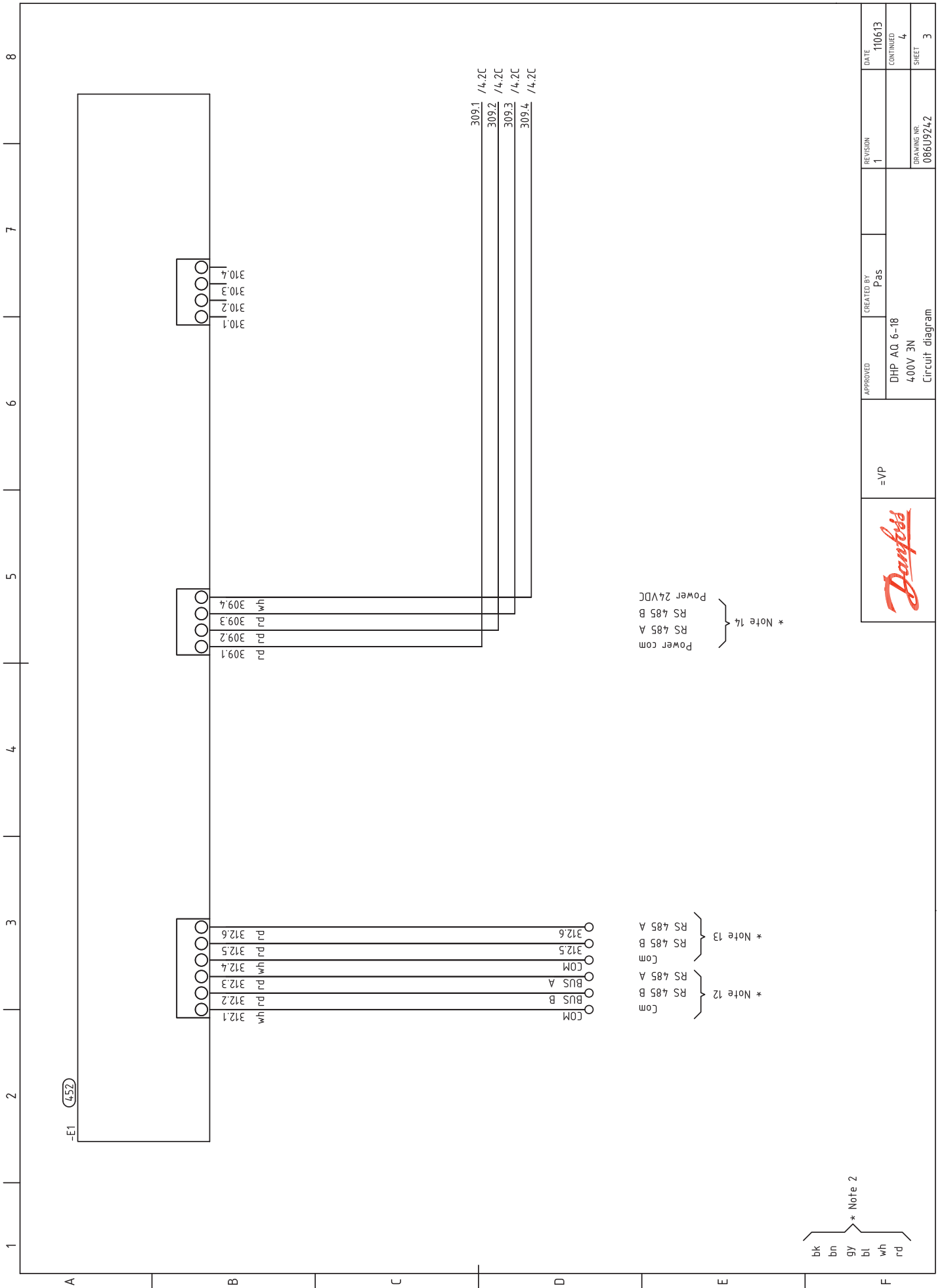
- (418)
- (419)
- (416)
- (50)
- (417)
- (305)

APPROVED	CREATED BY	REVISION	DATE
DHP AQ 6-18 400V 3N Circuit diagram	P.as	1	110609
			CONTINUED
			3
			SHEET
			2



=VP

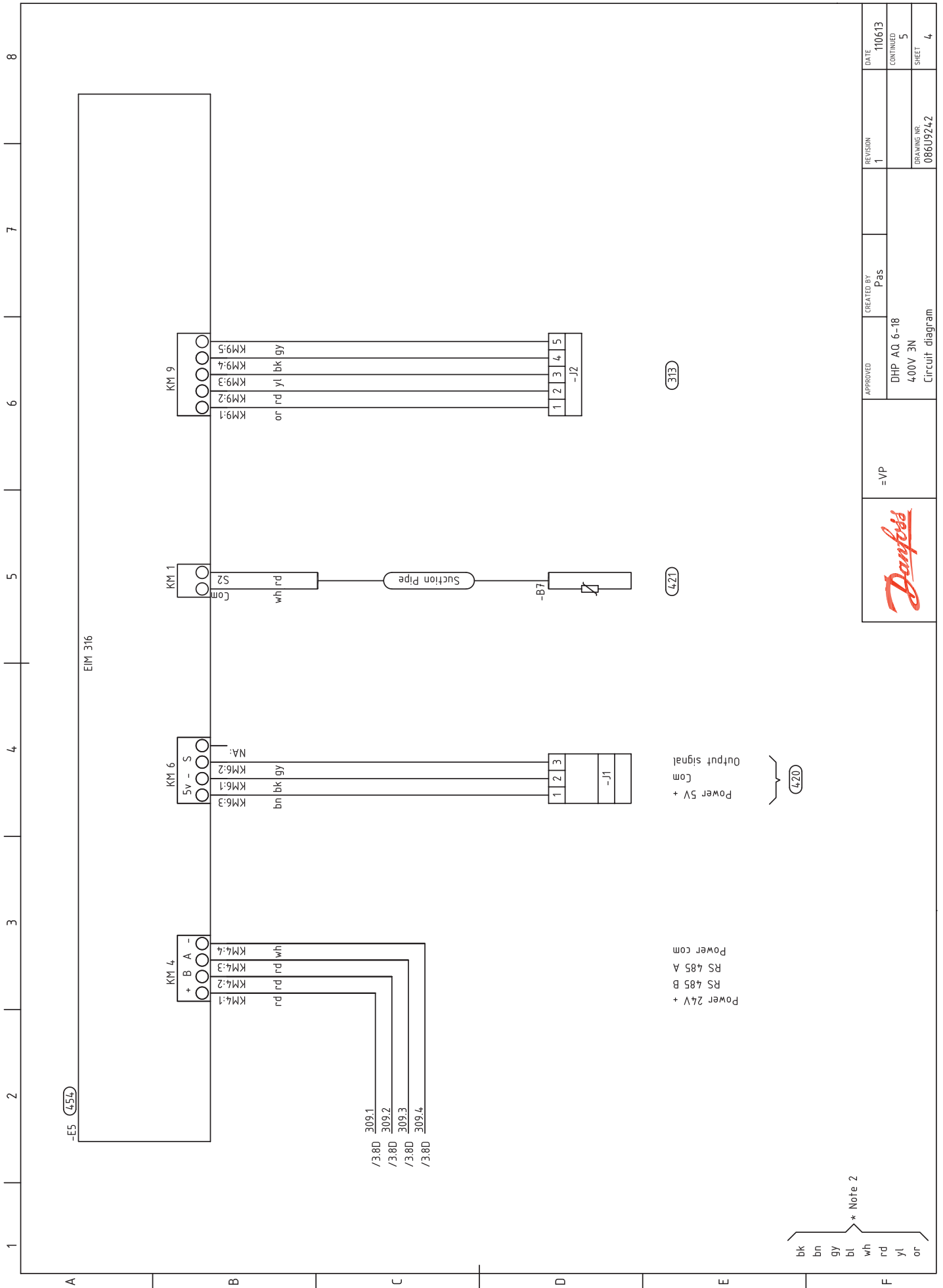
DHP-AQ 6 - 18kW 400V 3N



\* Note 2  
 bk  
 bn  
 gy  
 bl  
 wh  
 rd

APPROVED	CREATED BY	REVISION	DATE
DHP-AQ 6-18 400V 3N Circuit diagram	Pas	1	110613
			CONTINUED
			4
			SHEET
			3
=VP		DRAWING NO. 086J9242	

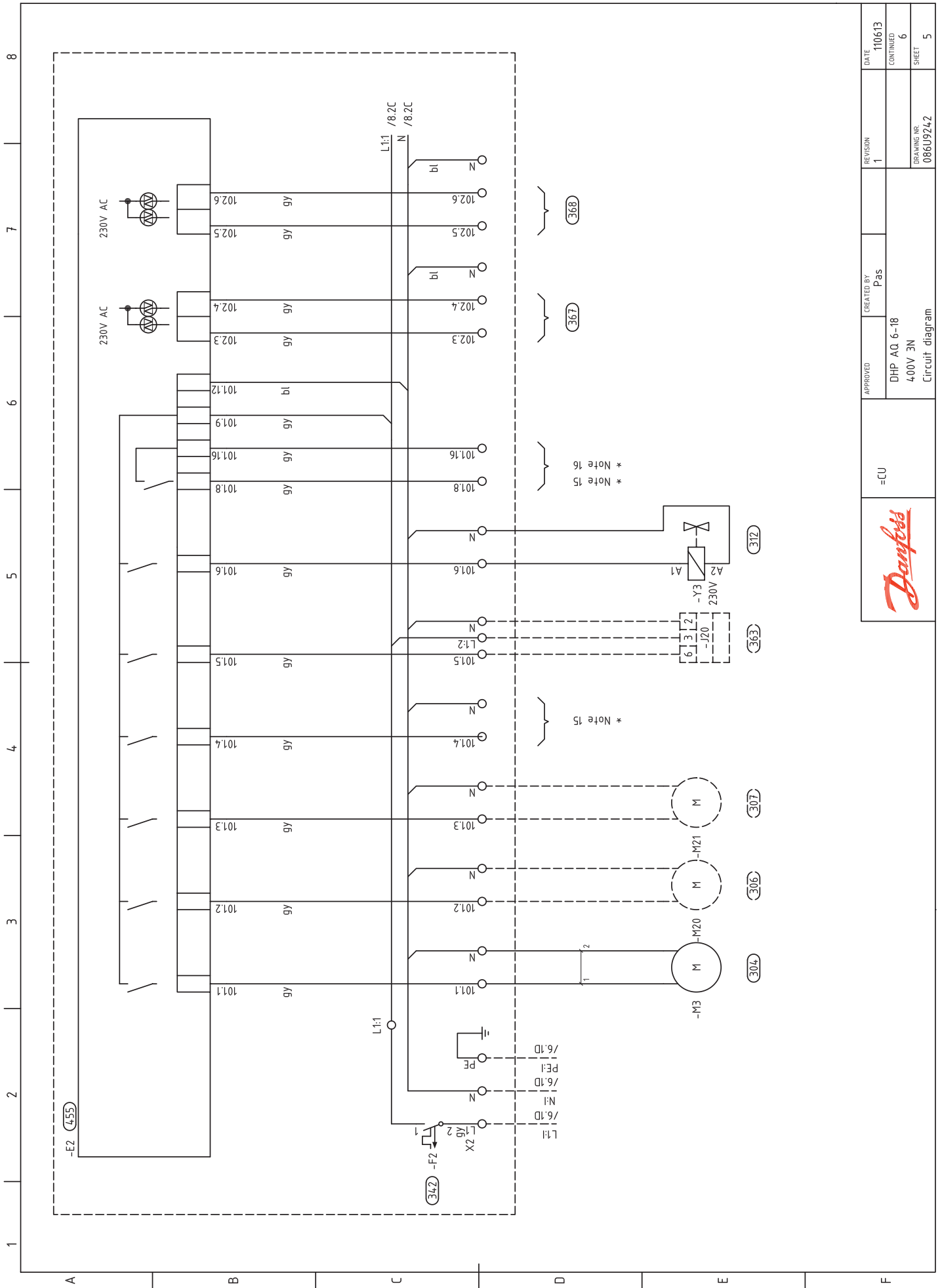




APPROVED	CREATED BY Pas	REVISION	DATE
		1	110613
DHP-AQ 6-18		CONTINUED	SHEET
400V 3N		DRAWING NR	5
Circuit diagram		086J9242	4

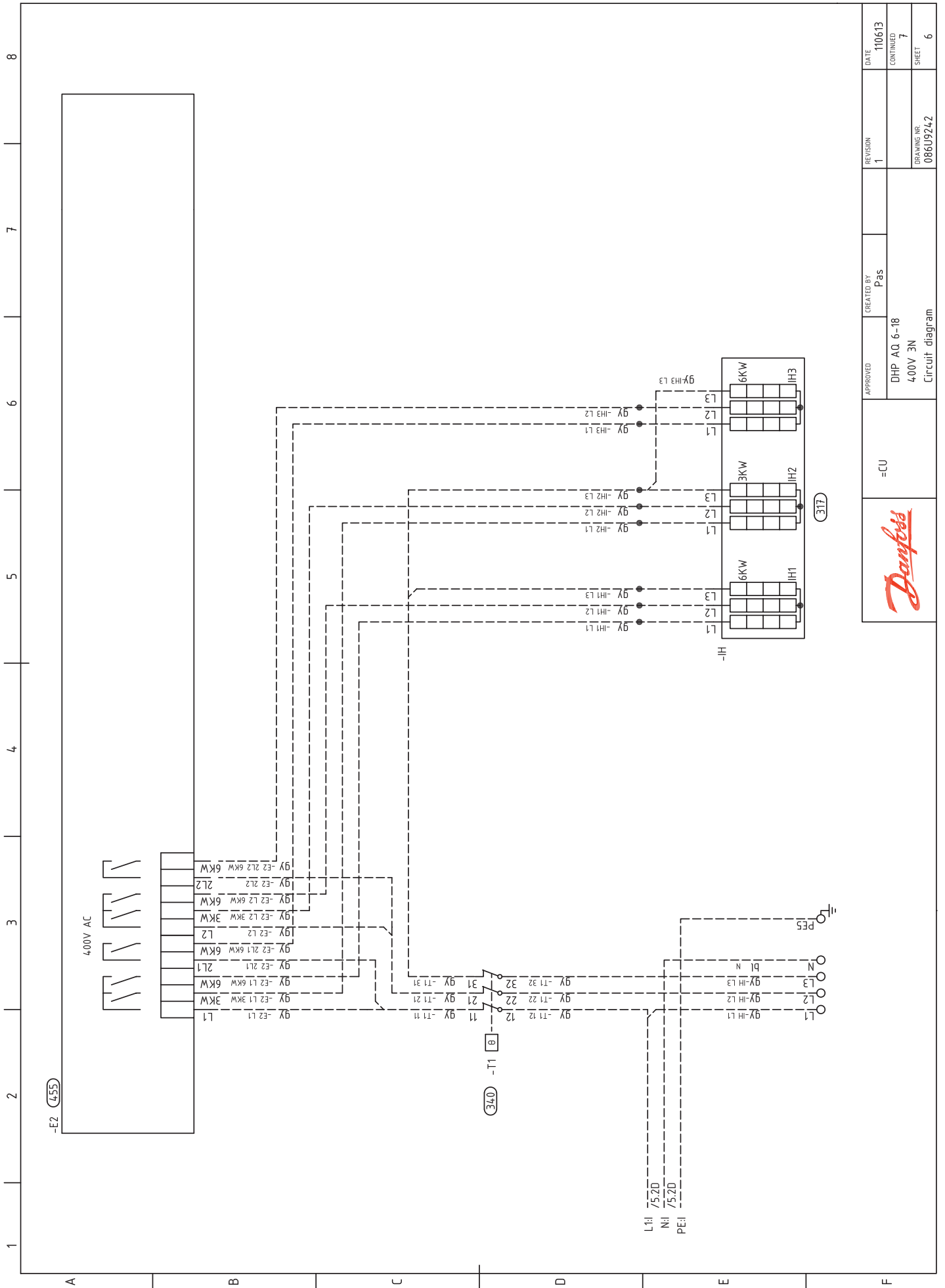



**DHP-AQ 6 - 18kW 400V 3N**



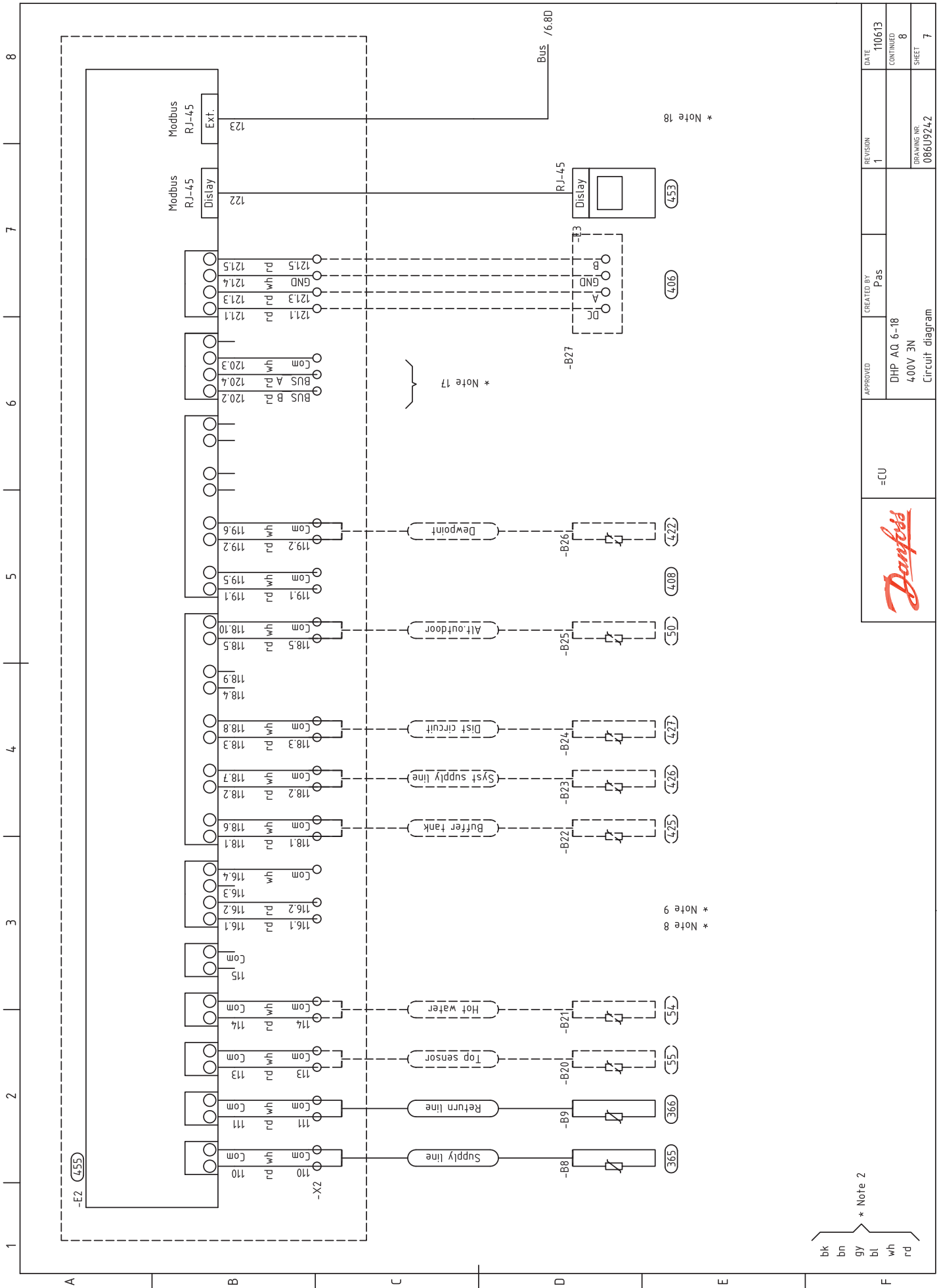
APPROVED	CREATED BY	REVISION	DATE
	Pas	1	110613
DHP AQ 6-18 400V 3N Circuit diagram			CONTINUED
			6
			SHEET
			5
=CU		DRAWING NR 086J9242	





	=CU	APPROVED	CREATED BY Pas	REVISION 1	DATE 110613
	DHP-AQ 6-18 400V 3N Circuit diagram			CONTINUED 7	SHEET 6
				DRAWING NR 086J9242	

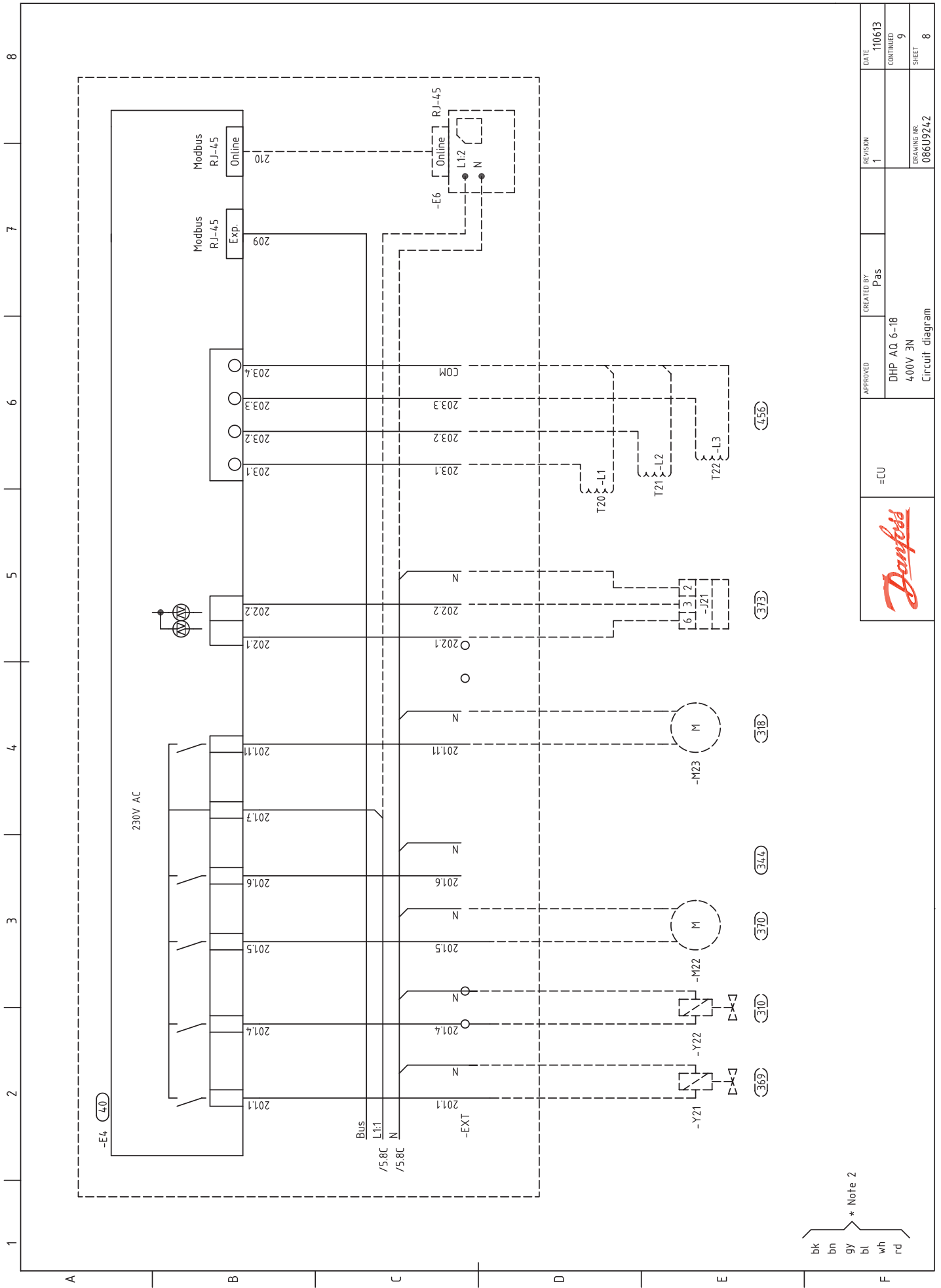




\* Note 2  
 bk  
 bn  
 gy  
 bl  
 wh  
 rd

APPROVED	CREATED BY P.as	REVISION	DATE
		1	110613
		CONTINUED	
DHP AQ 6-18 400V 3N Circuit diagram		DRAWING NR 086J9242	SHEET 8
=CU			SHEET 7

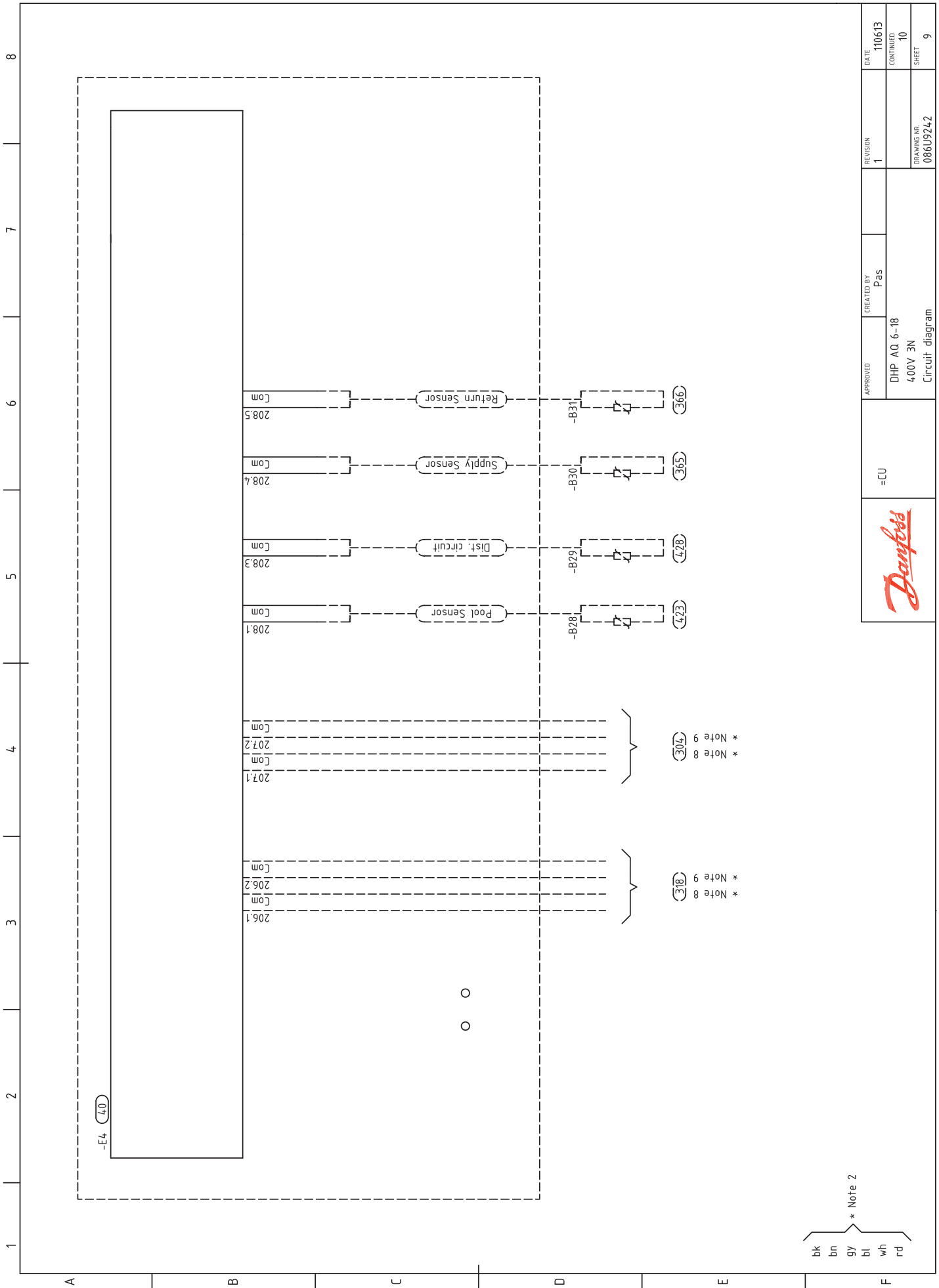




\* Note 2  
 bk  
 bn  
 gy  
 bl  
 wh  
 rd

APPROVED	CREATED BY Pas	REVISION	DATE
		DHP AQ 6-18 400V 3N Circuit diagram	110613
		=CU	CONTINUED 9
DRAWING NR 086J9242		SHEET 8	

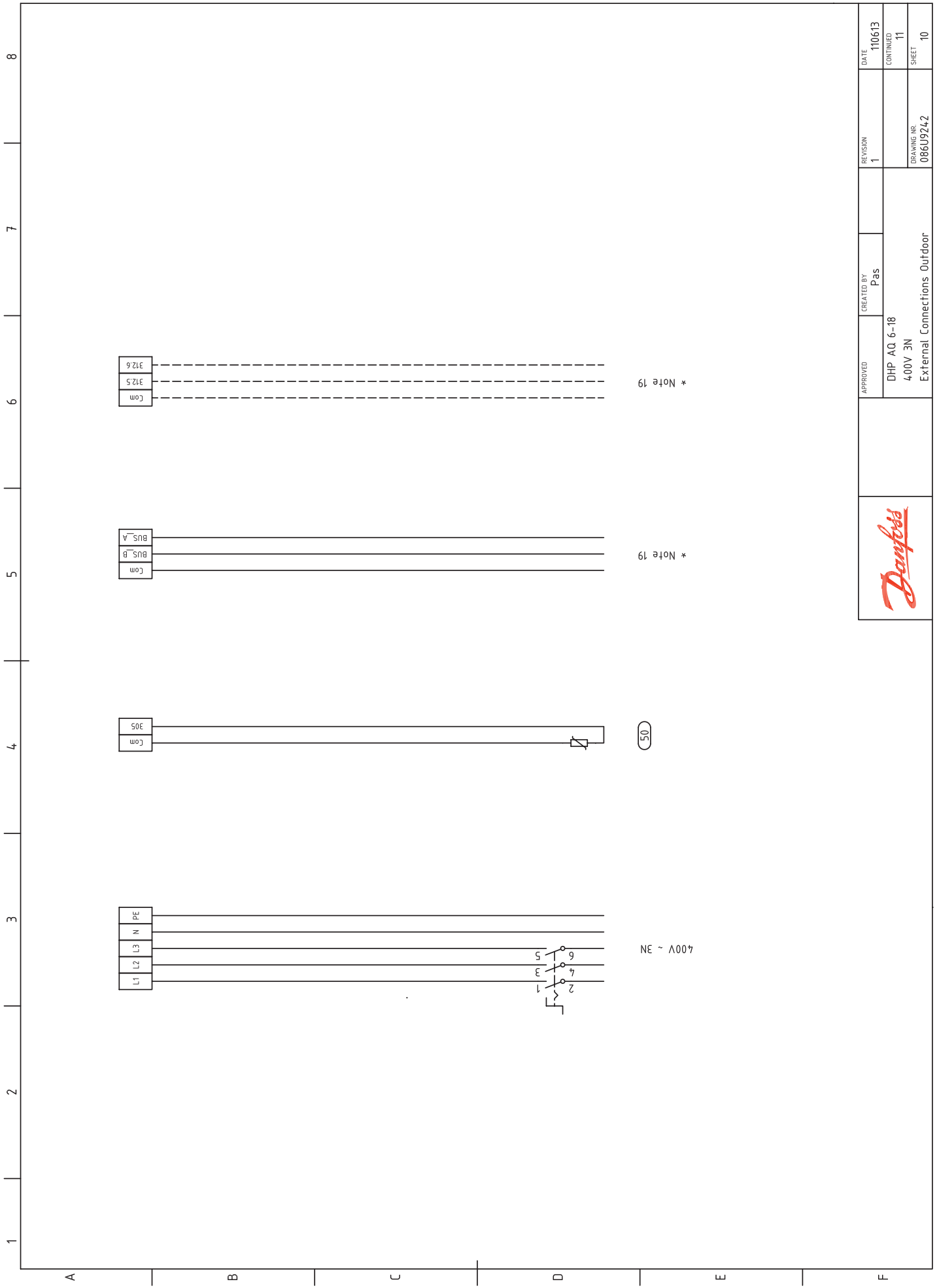
**DHP-AQ 6 – 18kW 400V 3N**



bk  
bn  
gy \* Note 2  
bl  
wh  
rd

APPROVED	CREATED BY Pas	REVISION	DATE
		DHP-AQ 6-18 400V 3N Circuit diagram	110613
		DRAWING NR 086J9242	CONTINUED 10
=CU		SHEET 9	





\* Note 19

\* Note 19

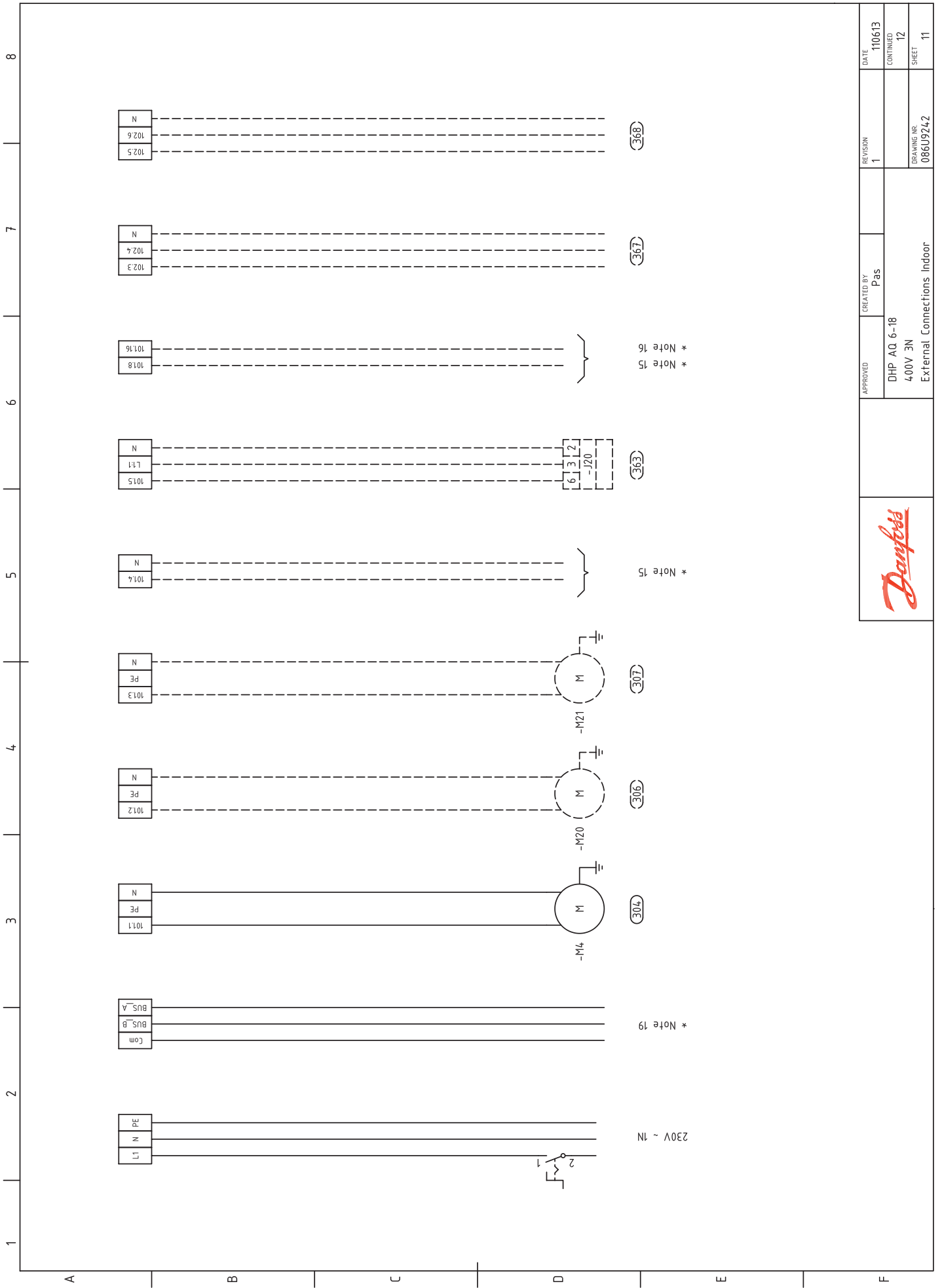
50


NE ~ 400V

APPROVED	CREATED BY	REVISION	DATE
	Pas	1	110613
DHP-AQ 6-18 400V 3N External Connections Outdoor			CONTINUED
			11
			SHEET
			10



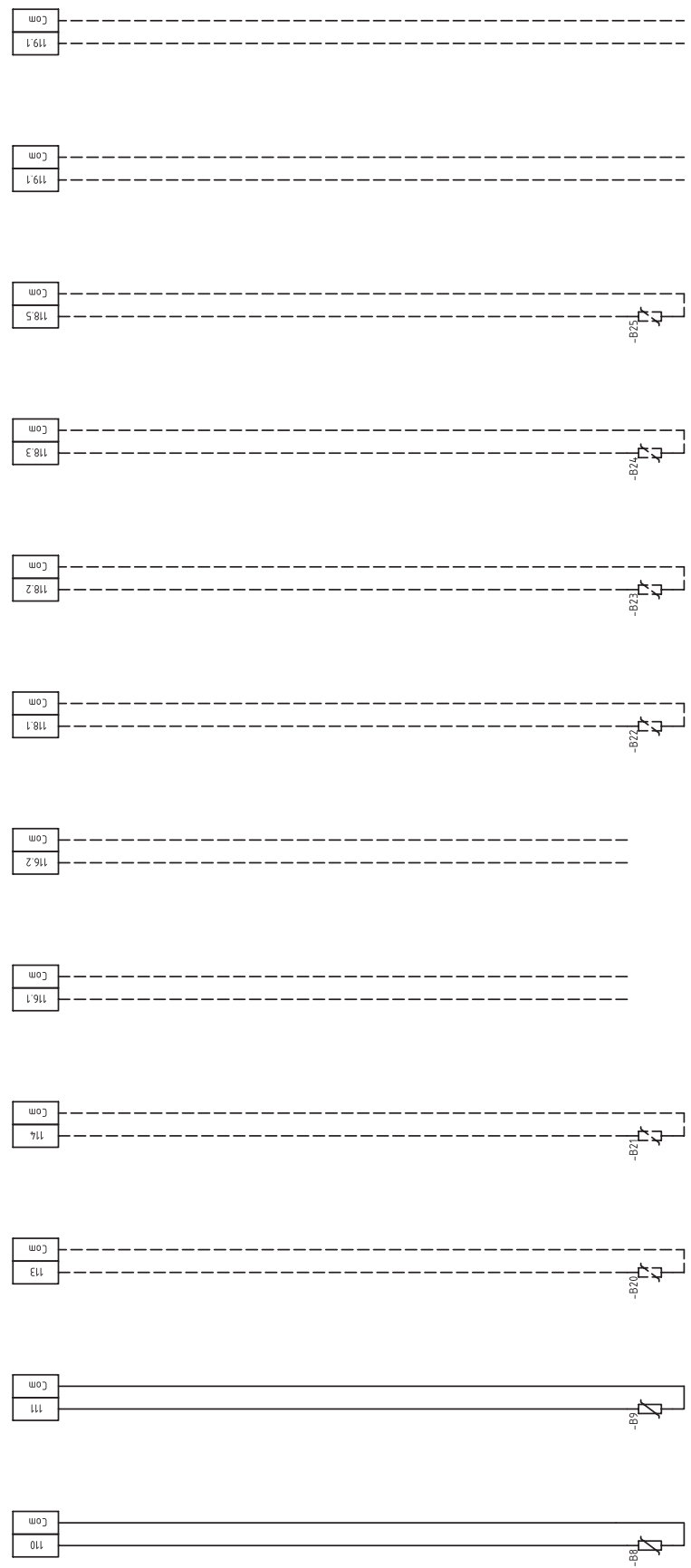
DHP-AQ 6 - 18kW 400V 3N




		APPROVED	CREATED BY	REVISION	DATE
			Pas	1	110613
		DHP AQ 6-18		CONTINUED	12
		400V 3N		DRAWING NR	SHEET
External Connections Indoor				086J9242	11

1 2 3 4 5 6 7 8

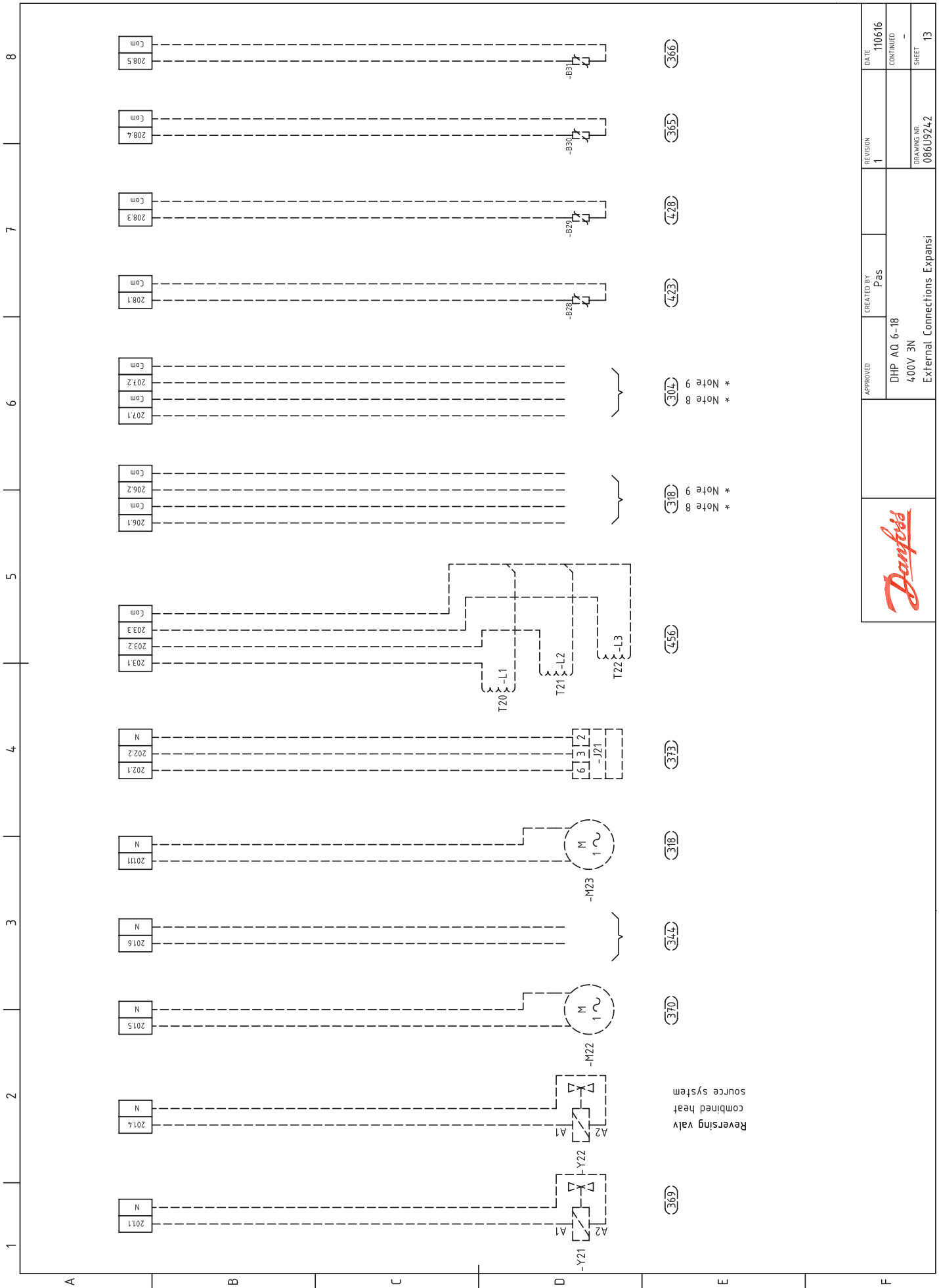
A B C D E F




(365) (366) (355) (354) \* Note 8 \* Note 9 (475) (476) (477) (472) (408) (472)

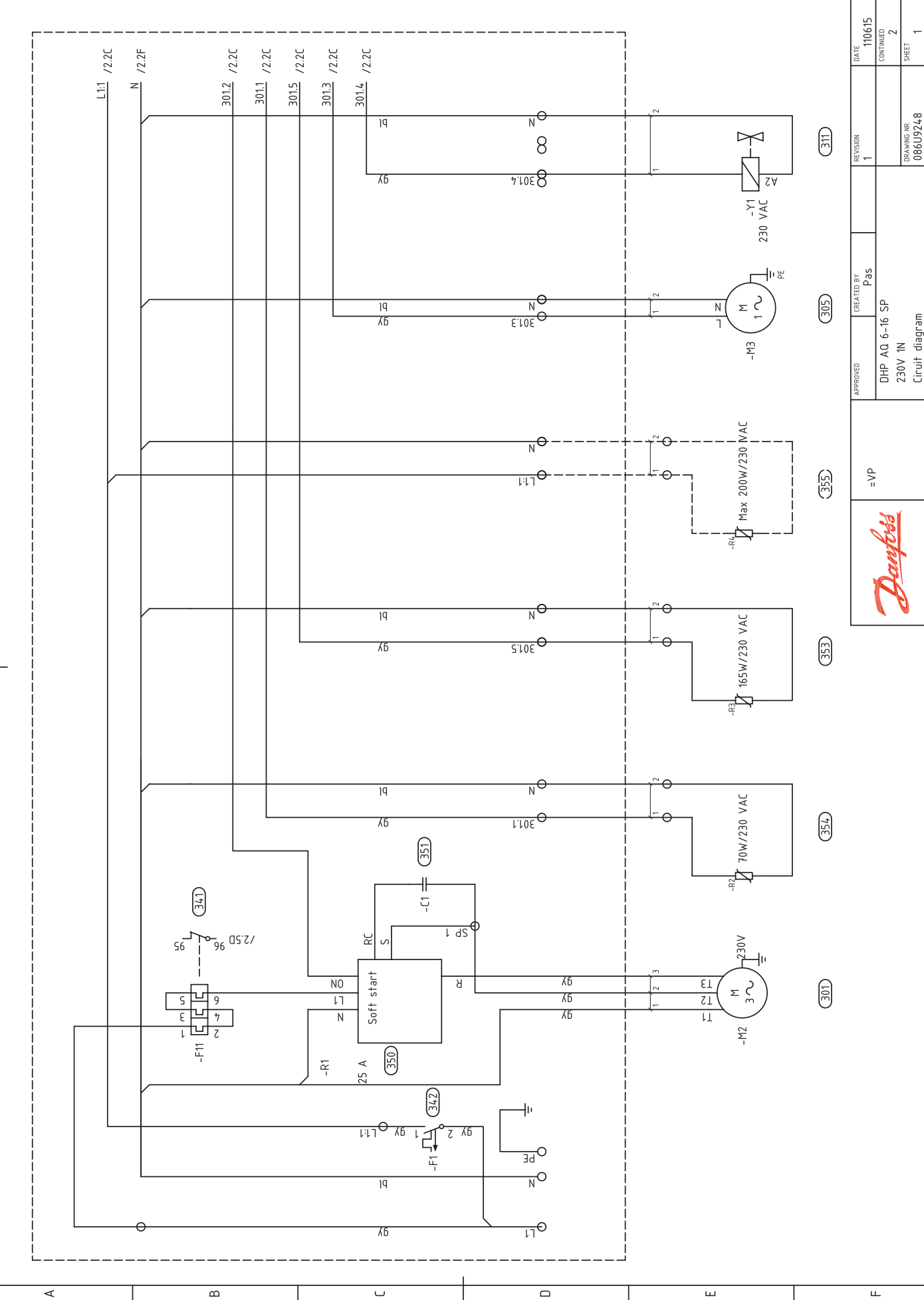
		APPROVED	CREATED BY	REVISION	DATE
		DHP-AQ 6-18 400V 3N External Connections Indoor		Pas	1
					CONTINUED
					13
					SHEET
					12

**DHP-AQ 6 - 18kW 400V 3N**



	APPROVED	CREATED BY	REVISION	DATE
		Pas	1	110616
	DHP-AQ 6-18 400V 3N External Connections Expansi			
				CONTINUED
				SHEET
				13

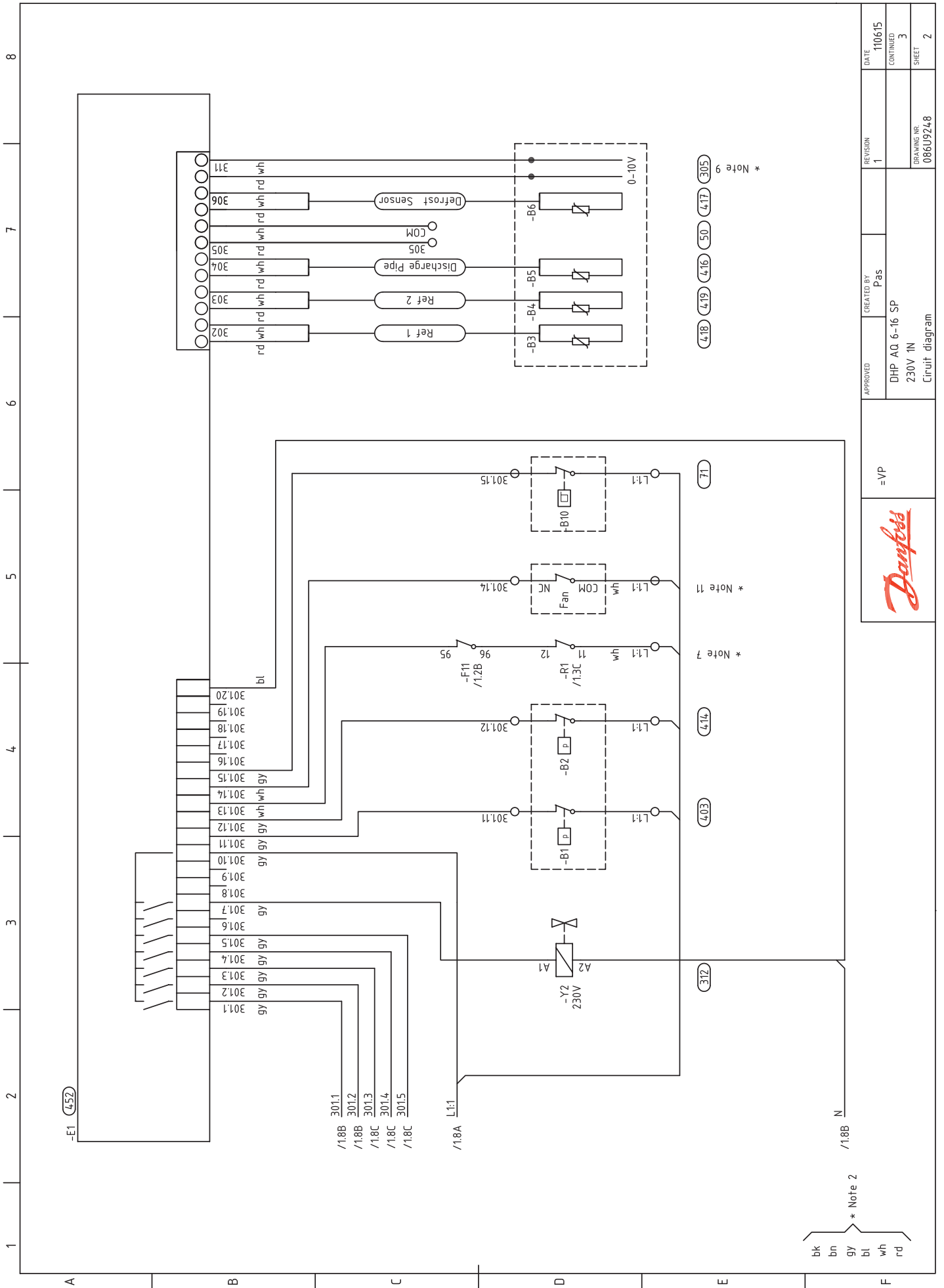
1 2 3 4 5 6 7 8



APPROVED	CREATED BY	DATE	REVISION
			1
DHP-AQ 6-16 SP 230V 1N Circuit diagram	=VP	DHP	DATE
			110615
DRAWING NR 086J9248	SHEET	CONTINUED	2
		SHEET	1

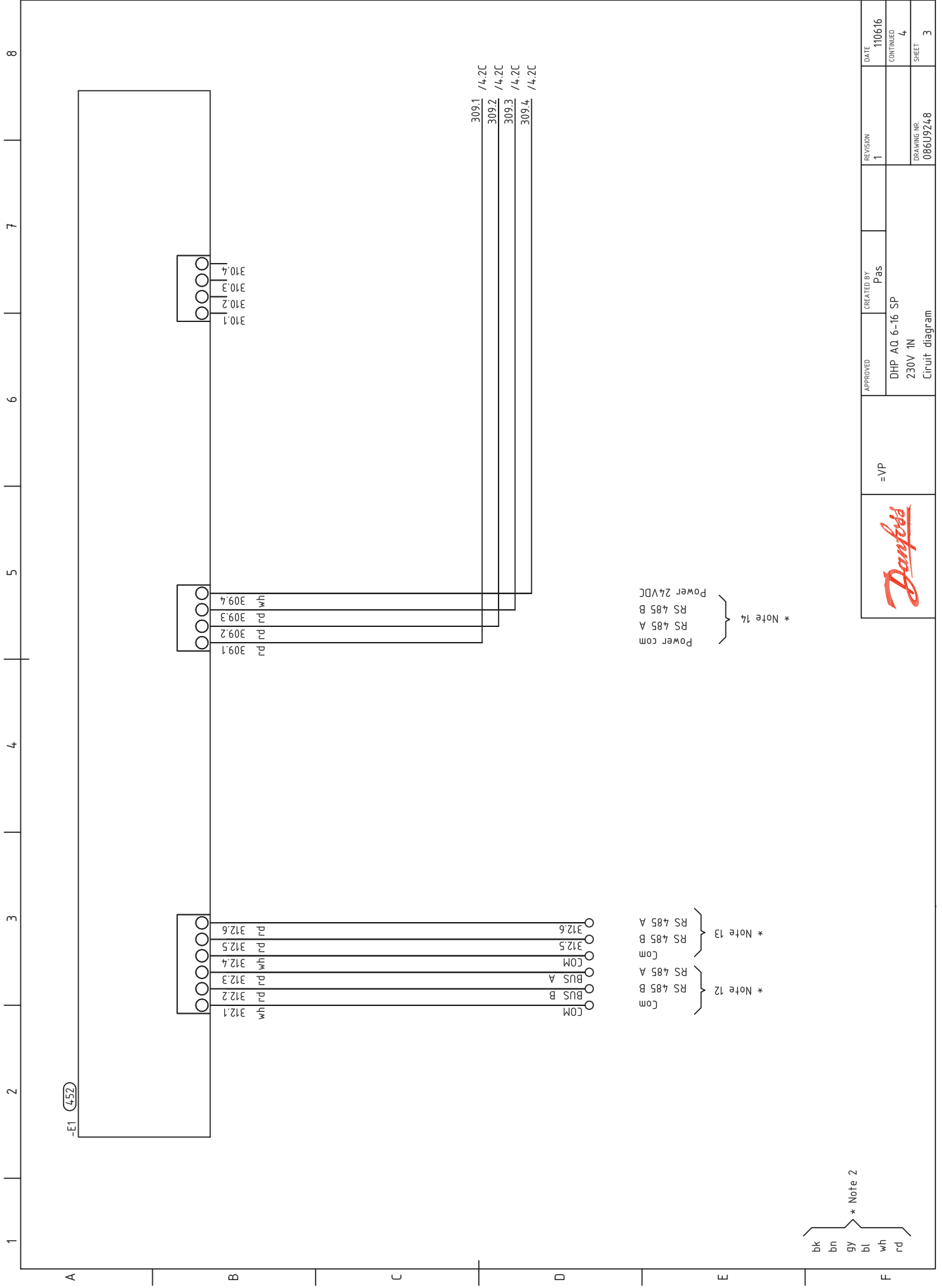


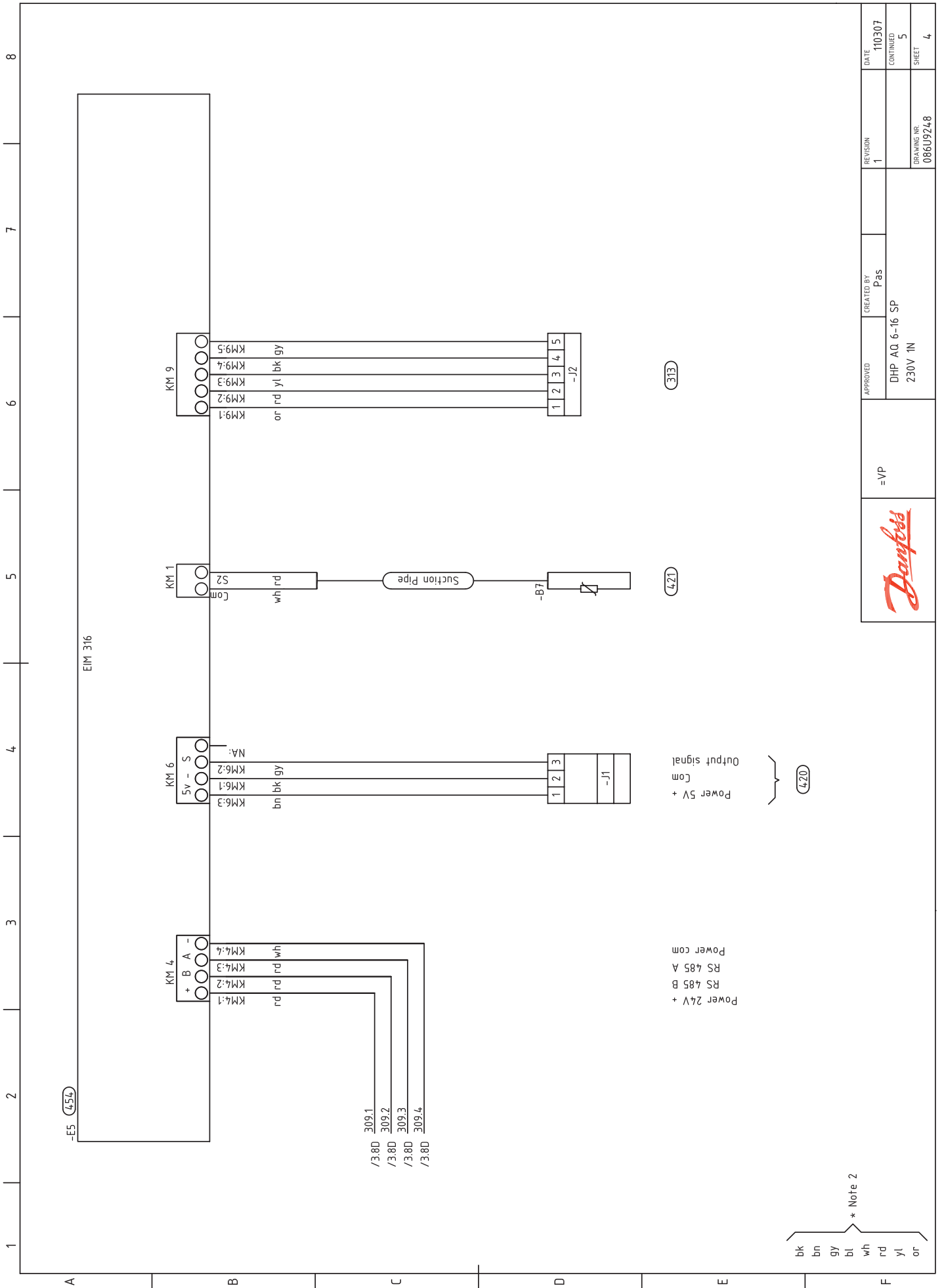




APPROVED	CREATED BY	REVISION	DATE
	Pas	1	110615
DHP AQ 6-16 SP 230V 1N Circuit diagram			CONTINUED 3
			SHEET 2
=VP		DRAWING NR 086J9248	





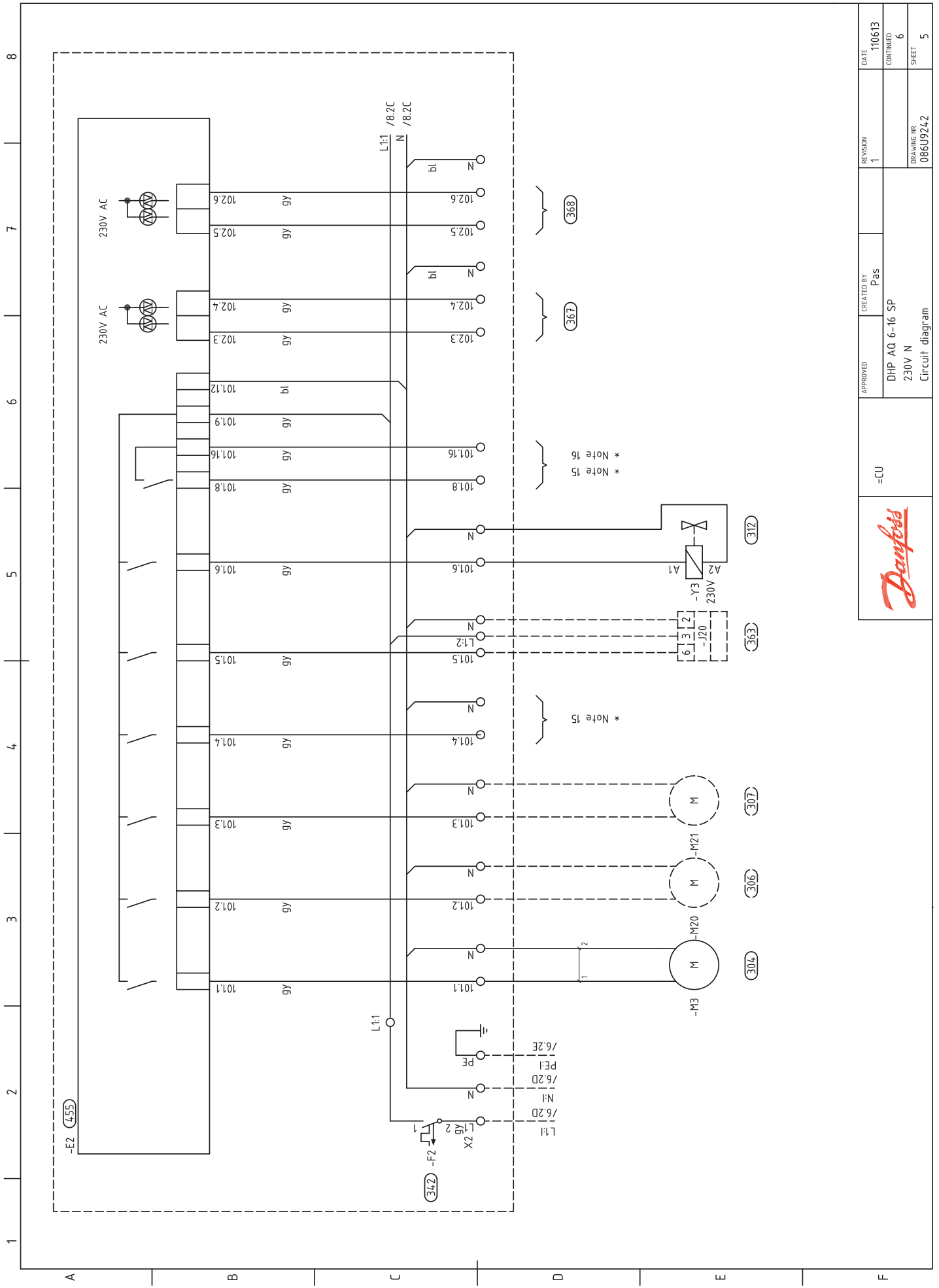


Power 24V +  
RS 485 B  
RS 485 A  
Power com

Power 5V +  
Com  
Output signal

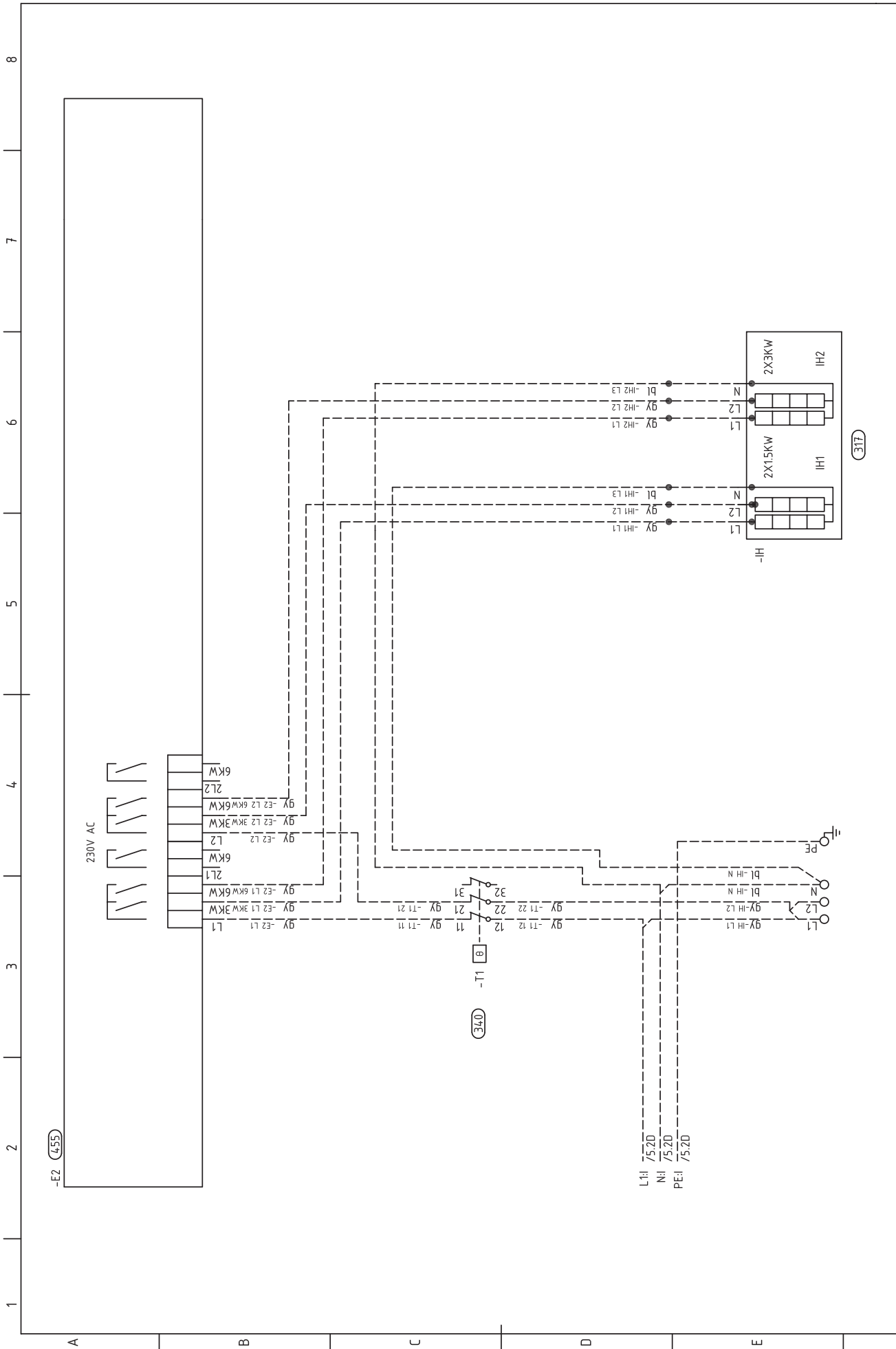



APPROVED	CREATED BY	REVISION	DATE
=VP	Pas	1	110307
DHP-AQ 6-16 SP 230V 1N			CONTINUED 5
DRAWING NR 086J9248			SHEET 4

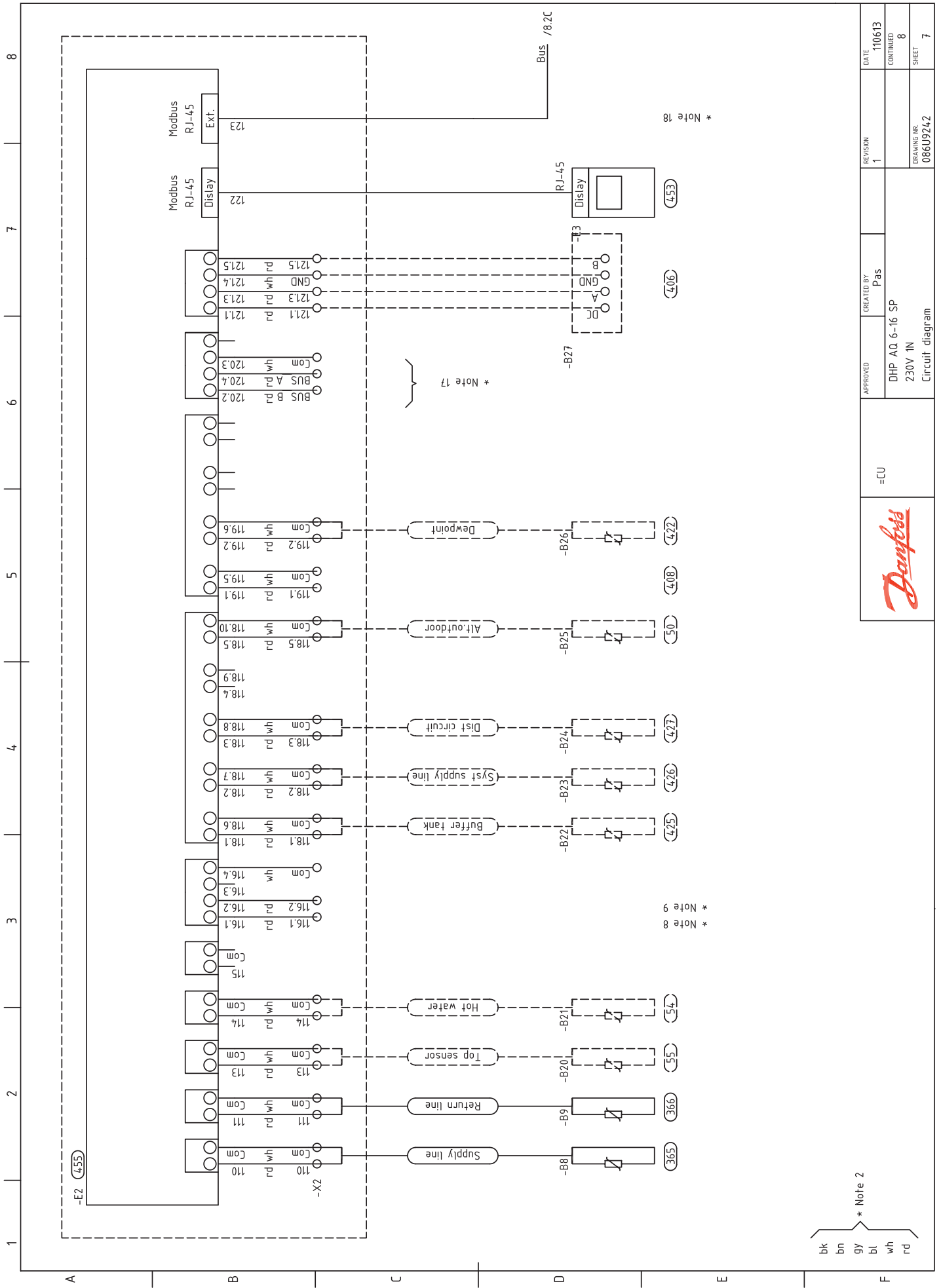


APPROVED	CREATED BY P.s	REVISION 1	DATE 110613
			CONTINUED 6
=CU	DHP-AQ 6-16 SP 230V N Circuit diagram	DRAWING NR 086J9242	SHEET 5

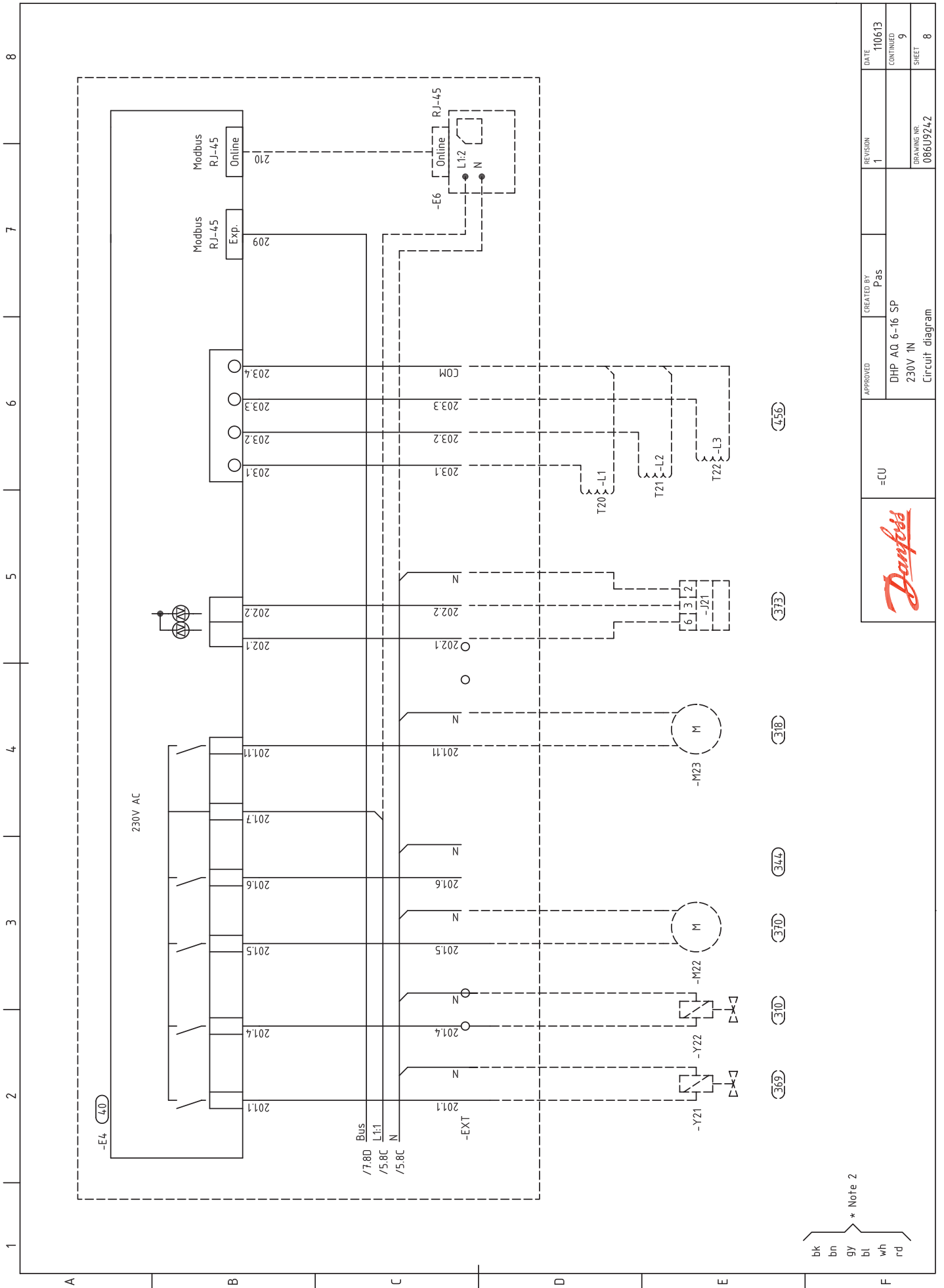
DHP-AQ 6 - 16kW 230V 1N



	=CU	APPROVED	CREATED BY	REVISION	DATE
			Pas	1	110307
		DHP AQ 6-16 SP 230V 1N Circuit diagram			
					SHEET 6



	=CU	APPROVED	CREATED BY	REVISION	DATE
			Pas	1	110613
		DHP-AQ 6-16 SP 230V 1N Circuit diagram		086J9242	8

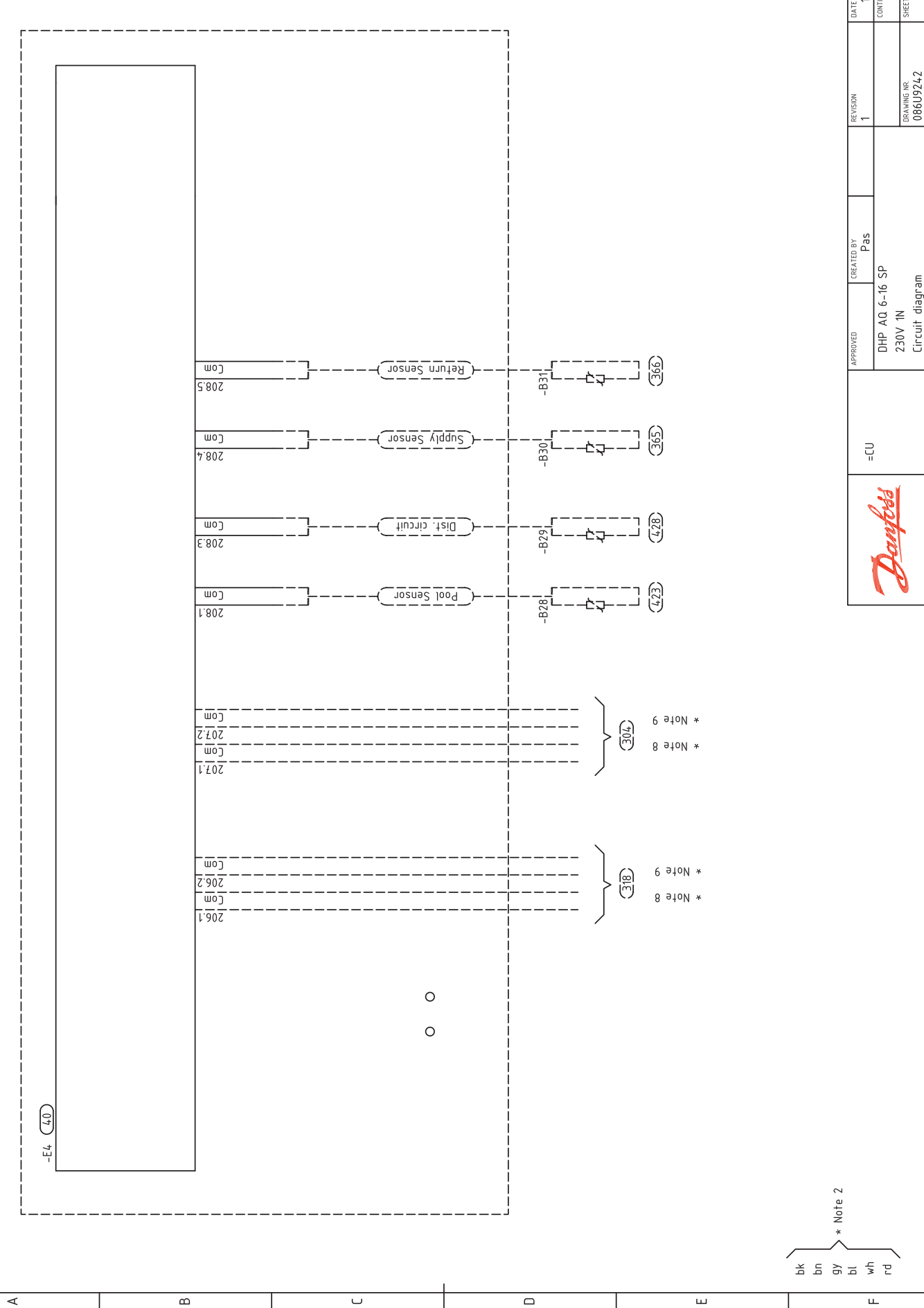


\* Note 2  
 bk  
 bn  
 gy  
 bl  
 wh  
 rd

APPROVED	CREATED BY Pas	REVISION	DATE
		1	110613
		CONTINUED	
DHP AQ 6-16 SP 230V 1N Circuit diagram		DRAWING NR	SHEET
=CU		086J9242	8



1 2 3 4 5 6 7 8



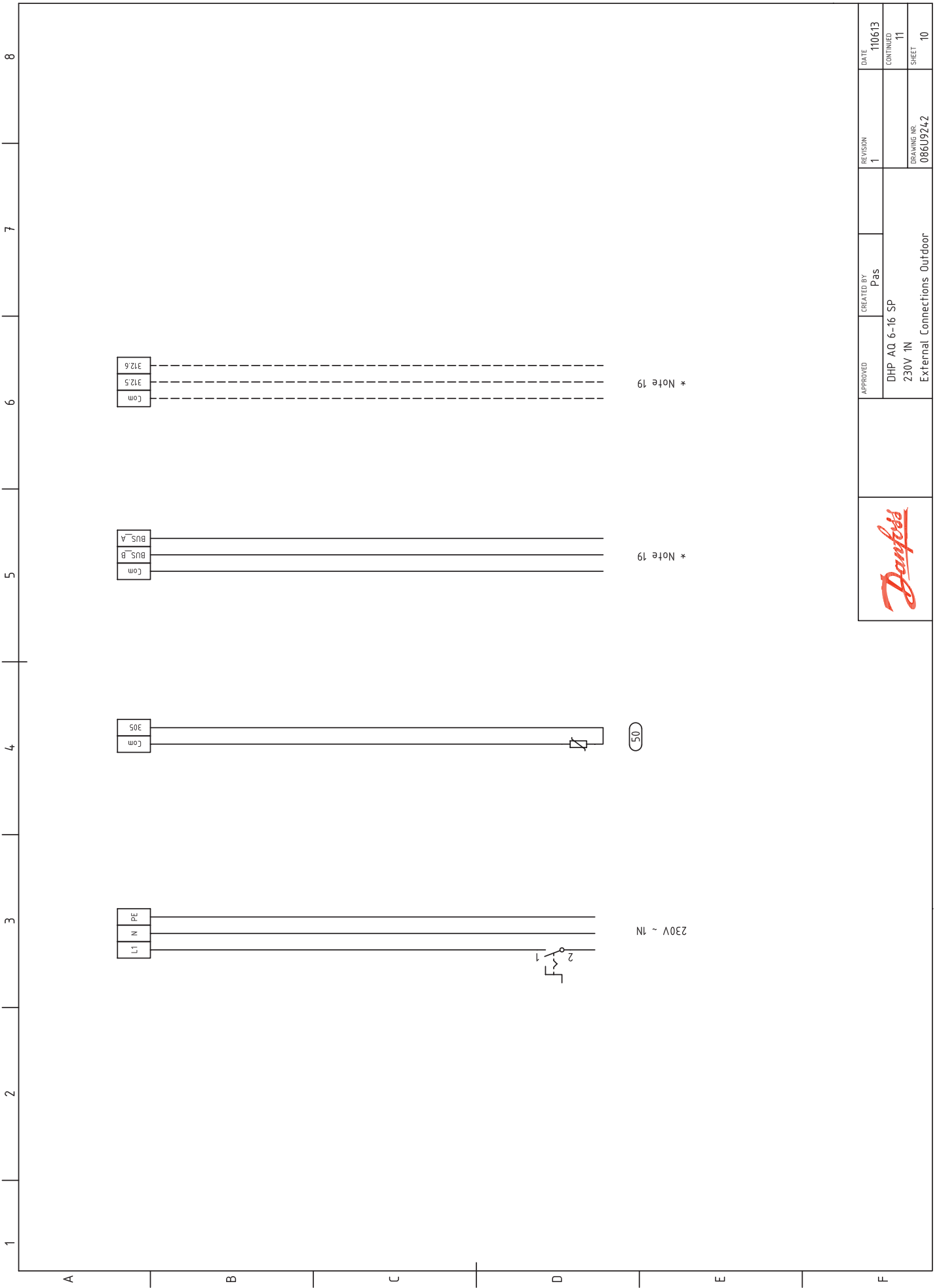
bk  
bn  
gy  
bl  
wh  
rd

\* Note 2

=CU		APPROVED	CREATED BY	REVISION	DATE
			Pas	1	110613
		DHP-AQ 6-16 SP 230V 1N Circuit diagram			
					SHEET 9
					DRAWING NR 086J9242



**DHP-AQ 6 - 16kW 230V 1N**



230V - 1N

50

\* Note 19

\* Note 19

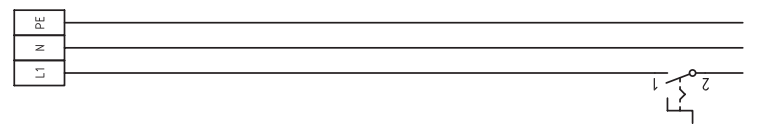
\* Note 19

APPROVED	CREATED BY	REVISION	DATE
	Pas	1	110613
DHP AQ 6-16 SP 230V 1N External Connections Outdoor			CONTINUED
			11
			SHEET
			10
			DRAWING NR
			086J9242

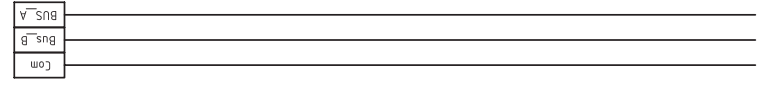


1 2 3 4 5 6 7 8

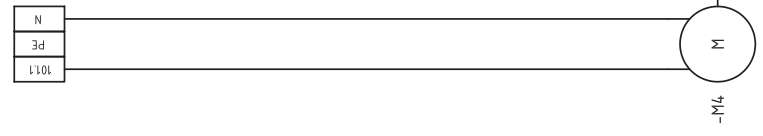
A B C D E F



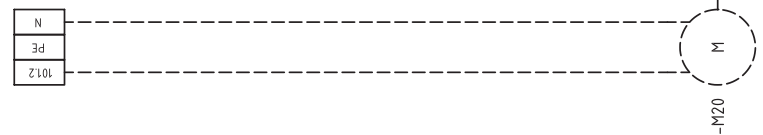
230V - 1N



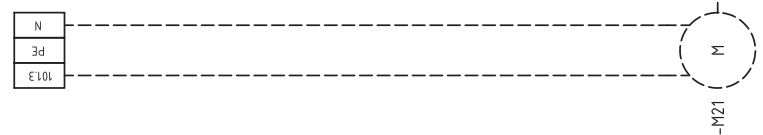
\* Note 19



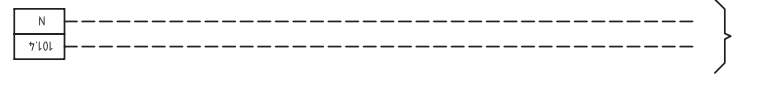
304



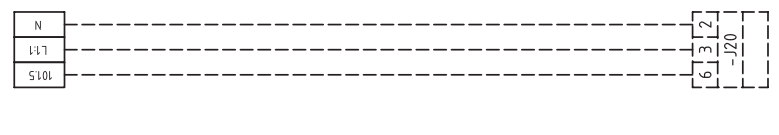
306



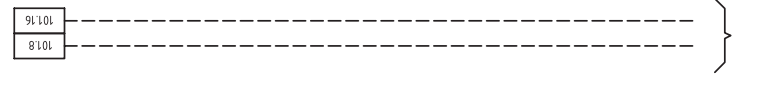
307



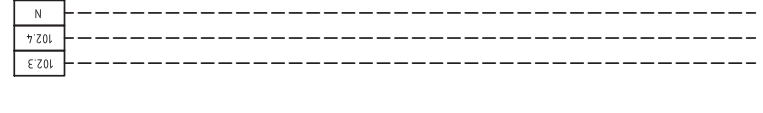
\* Note 15



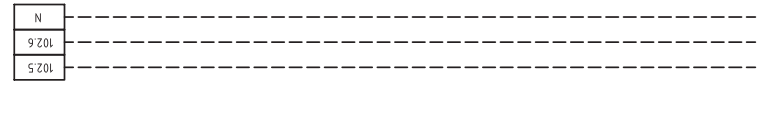
303



\* Note 15  
\* Note 16



397

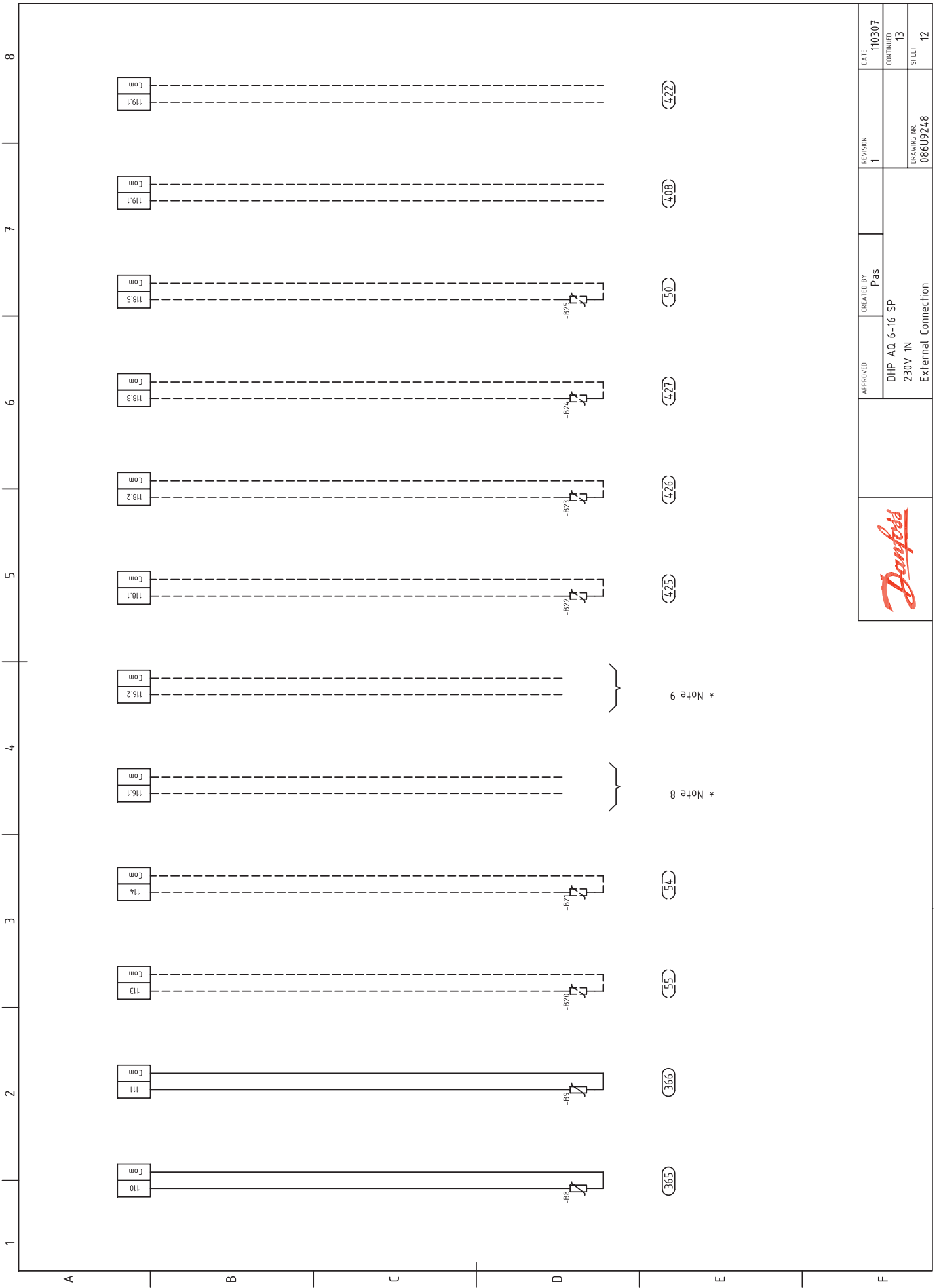



368

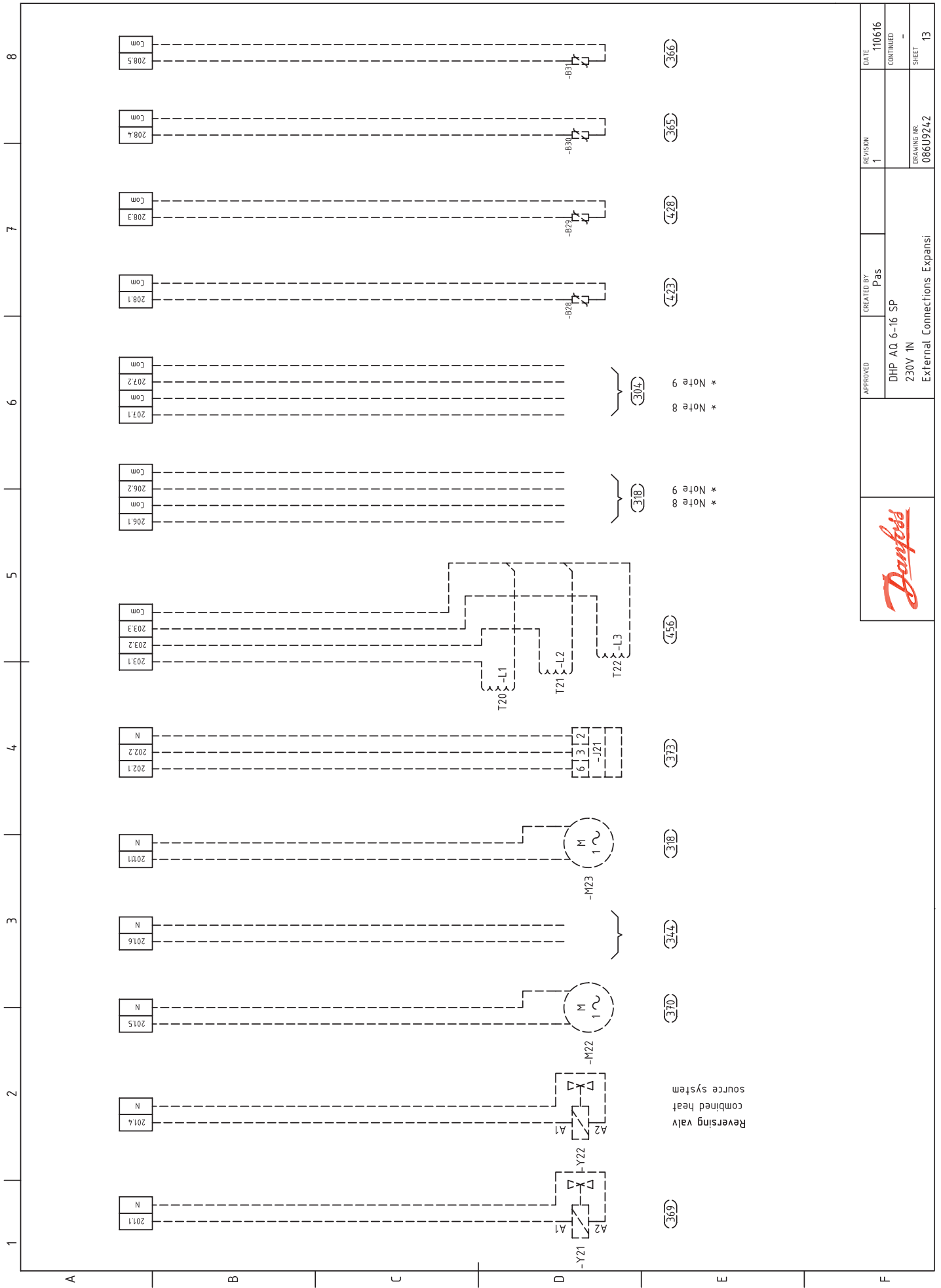


APPROVED	CREATED BY	REVISION	DATE
	pas	1	110307
DHP AQ 6-16 SP 230V 1N External Connection			CONTINUED
			12
			SHEET
			11
			DRAWING NR
			086J9248

**DHP-AQ 6 - 16kW 230V 1N**



		APPROVED	CREATED BY	REVISION	DATE
			Pas	1	110307
		DHP AQ 6-16 SP			
		230V 1N			
		External Connection			
		DRAWING NR		CONTINUED	SHEET
		086J9248		13	12



APPROVED	CREATED BY Pas	REVISION 1	DATE
			110616
DHP-AQ 6-16 SP 230V 1N External Connections Expansi			CONTINUED
			DRAWING NR 086J9242
			SHEET 13

*Danfoss*

Danfoss A/S  
[www.heatpumps.danfoss.com](http://www.heatpumps.danfoss.com)